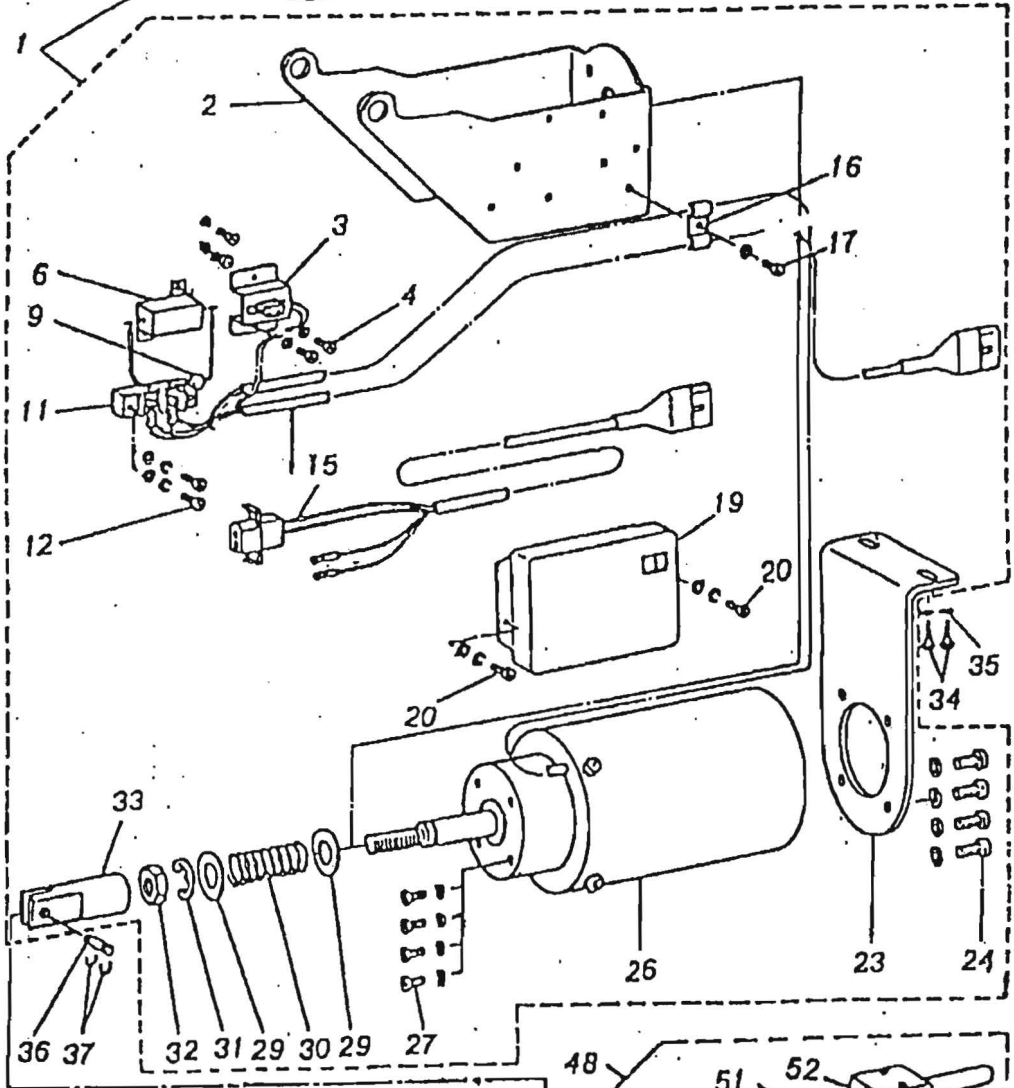
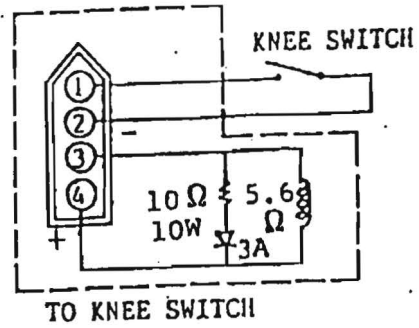
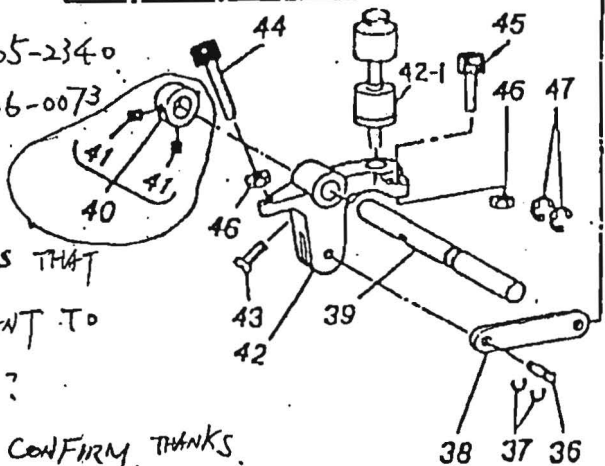


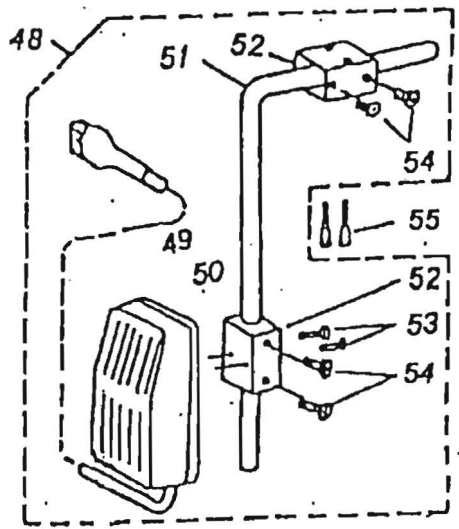
KA-2
AK-5



#40. 1405-2340
#41. 2506-0073



IS THIS THAT
YOU WANT TO
ORDER?
PLEASE CONFIRM, THANKS.



K A - 2 PRESSER LIFTING SOLENOID COMPONENTS (FOR JUKI 555)
(SPECIAL ORDER PARTS)

REF NO.	PART NO.	DESCRIPTION	QUANTITY
1	0340 - 0420	PRESSER LIFTING SOLENOID ASM -----	1
2	1605 - 2291	SOLENOID INSTALLING BRACKET(A) -----	1
3	1405 - 2320	2 POLE RECEPTACLE INSTALLING BASE -----	1
4	3903 - 0058	SCREW M3 × 0.5 × 8 - 2 -----	2
6	630B- 1000	RESISTOR 10Ω 20W -----	1
9	5152 - 0052	DIODE 3A HER305 -----	1
11	8800 - 9320	2 POLE TERMINAL BLOCK -----	1
12	3903 - 0057	SCREW M3 × 0.5 × 12 - 2 -----	2
15	0670 - 0800	PRESSER LIFTING CORD ASM -----	1
16	1405 - 0090	CORD HOLDER -----	2
17	3903 - 0058	SCREW M3 × 0.5 × 8 - 2 -----	1
19	1605 - 2280	PRESSER LIFTING COVER -----	1
20	3903 - 0058	SCREW M3 × 0.5 × 8 - 2 -----	2
23	1605 - 2310	SOLENOID INSTALLING BRACKET(B) -----	1
24	3905 - 0086	SCREW M5×0.8×12-2 -----	4
26	0670 - 0620	PRESSER LIFTING SOLENOID ASM -----	1
27	3905 - 0086	SCREW M5×0.8×12-2 -----	4
29	1405 - 2460	THRUST WASHER -----	2
30	1900 - 0270	SPRING -----	1
31	2600 - 0180	SNAP RING 12 -----	1
32	4100 - 1500	NUT M10 -----	1
33	1405 - 2331	LIFTING LEVER SHAFT -----	1
34	4900 - 0060	WOOD SCREW M5×35 -----	2
35	2600 - 0030	WASHER M5.2×9.5×0.6 -----	2
36	1102 - 1840	PEDEL SWITCH FRAME STUD -----	2
37	2600 - 0130	SNAP RING 3.2 -----	4
38	1102 - 1850	LEVER CONNECTING ROD -----	1
39	1102 - 1861	PRESSER LIFTING SHAFT -----	1
40	1405 - 2340	THRUST COLLAR ASM.D=11 W=10 -----	1
41	3506 - 0073	SCREW M6×0.75×6 -----	2
42	1405 - 2350	PRESSER LIFTING LEVER -----	1
43	4705 - 9287	SCREW 15/64×28×14 -----	1
44	3706 - 1034	PRESSER LIFTING STOPPER (B) -----	1
45	3706 - 1018	PRESSER LIFTING STOPPER (A) -----	1
46	4060 - 1000	NUT M6×1.0 -----	2
47	2600 - 0170	THRUST RING 10 -----	2
48	0340 - 0430	KNEE SWITCH ASM -----	1
49	0670 - 0790	CARD HOLDER ASM -----	1
50	8300 - 4341	MICROSWITCH -----	1
51	1102 - 1870	DRIVING BAR -----	1
52	1405 - 2360	BRACKET -----	2
53	3904 - 007E	SCREW M4×0.7×15 -----	2
54	4705 - 9287	SCREW 15/64×28×12 -----	4
55	4900 - 0060	WOOD SCREW D=5.0 L=35 -----	2